

ISE20 SAMPLE ABSTRACT AND INSTRUCTIONS FOR ABSTRACT PREPARATION

T. Nakajima¹, and Y. Suzuki²

¹Tokyo University of Science, Japan, ²The University of Tokyo, Japan,

The purpose of an abstract submitted to ISE20 is to tell the Program Committee what new results you will present. It is important within the first few sentences to state what your primary results are. For example: “This paper reports the design, fabrication, and testing of a novel MEMS-based piezoelectrets.” It is also important to identify how the new work differs from previous work of your own group and of other groups, especially work presented at recent and upcoming international meetings. For example: “The work builds on a fabrication process reported at CEIDP2023 [1]. The methods for performance analysis have been accepted for publication elsewhere [2,3]. The method reported here differs from previous work [4] in the specific charging method and in the geometry of the electrodes and their placement within the structure.”

The abstract is limited to two pages (A4, 21 cm x 29.7 cm). The text is limited to no more than **600 words** (please indicate the word count at the bottom of your abstract). Fonts should be Times New Roman 11pt with the exception of the title, which should be Times New Roman 14pt **Bold**. Figures and Tables should be collected on the second page with captions in Times New Roman 10pt *Italic*. Make sure that all figures and photos are clearly visible. If the program committee cannot clearly see and understand the role of the visual material included, the abstract likely will be viewed negatively. All drawings, photographs, and plots should be clearly labeled with appropriately sized fonts identifying the relevant components contained in the figure.

Please place figures and tables on the second page. All abstracts, submitted on time, will be considered for both Oral and Poster Sessions unless specifically requested a poster presentation. This request should be chosen in the submission site. All abstracts are to be submitted in Portable Document Format (PDF) online via the ISE20 website. Abstracts will not be accepted via email, fax, or post. Once your abstract has been successfully uploaded, you will be sent a confirmation. The deadline to submit your abstract is **Friday, April 11, 2025**.

Word count: 348

References

- [1] S. Ample, *CEIDP 2023*, pp. 100-103.
- [2] A. B. Stract and S. Ample, *Tech. Digest IEDM 2014*, pp. 200-205.
- [3] S. Mart and S. O. Lution, *J. Microelectromech. Syst.*, 23 (2015), pp. 300-315.
- [4] B. Etter and A. P. Proach, *The Biosensor Handbook*, 2nd ed. (Springer, 2012), pp. 400-401

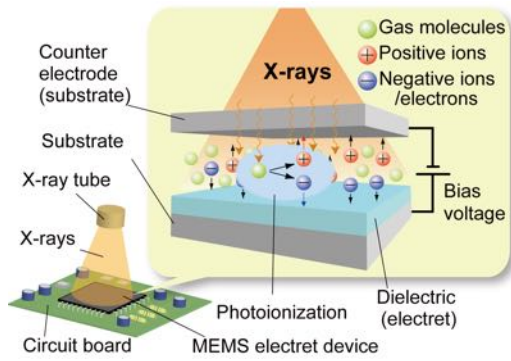


Figure 1. Example of a device schematic with each component clearly labeled.

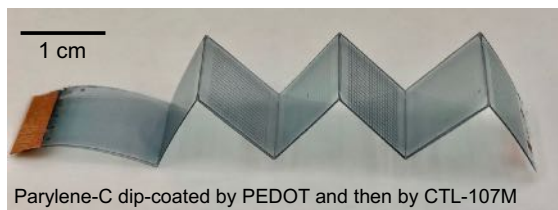


Figure 2. Example of a device photograph including scale bar.

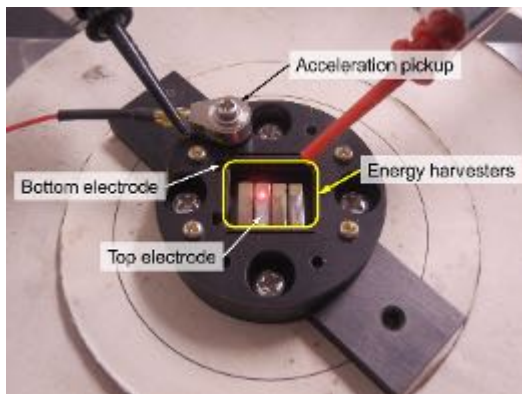


Figure 3. Example photograph of an experimental setup with labeled device and components.

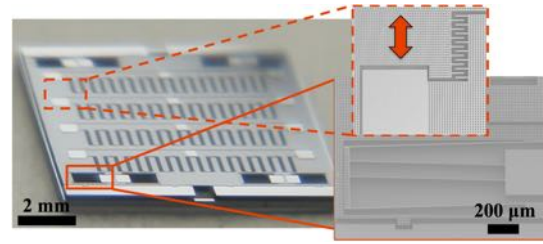


Figure 4. Example high-quality SEM photograph including scale bar.

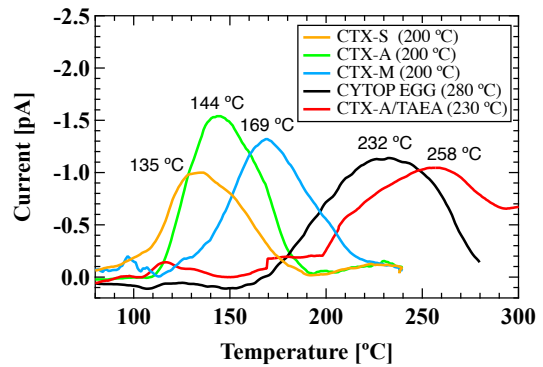


Figure 5 Example graph showing axes, values, labels, and units at an appropriate font size as well as clearly defined data points distinguishable in black and white.

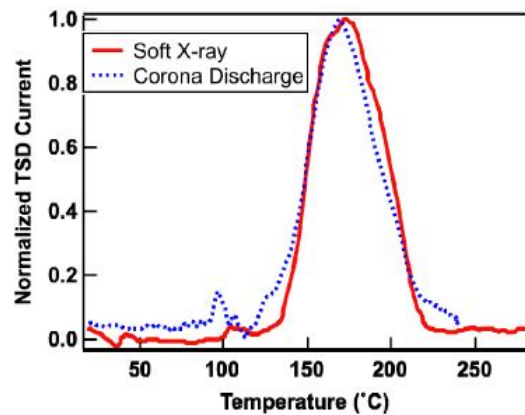


Figure 6 Example graph showing axes, values, labels, and units at an appropriate font size as well as clearly defined data points distinguishable in black and white.